

DETAILED BUDGET PROPOSALS

SERVICE:	Housing and Environment
-----------------	-------------------------

SAVING NAME:	Market testing -Grounds Services
---------------------	----------------------------------

HEAD OF SERVICE:	Norrie Steed
-------------------------	--------------

REFERENCE No:	ENV26
----------------------	-------

CATEGORY:	Service Redesign
------------------	------------------

	Financial Impact:			
	2009/10 £'000	2010/11 £'000	2011/12 £'000	2012/13 £'000
Costs/(Saving)	0	(393)	(1,575)	(1,575)

	Personnel Impact:			
	2009/10	2010/11	2011/12	2012/13
FTE	0	(20)	(20)	(20)
Head Count	0	(20)	(20)	(20)

Brief Description of Budget Saving

This is essentially a further service review of all aspects of the whole of Environmental Services, excluding: Street Sweeping; Grounds Maintenance of Sports Grounds & Playing Fields ; Parks & Gardens and the Housing Amenity Areas included in the 2009 grounds maintenance tendering process. This gives an overall budget of £6.3 million. The savings are at a level of 20% and would not start to take effect before December 2010. Note that the exclusion of parks and gardens -perhaps to a Trust -this would require further (prompt) investigation as regards feasibility and would remove £1,515,000 from the General Fund.

Deliverability Issues and Risks

This is a large undertaking and cannot be delivered to coincide with the start of the financial year 2010/11. It is estimated that a 20% saving could be delivered, but the detailed figures have to be worked out fully before an accurate savings figure can be given. It is anticipated that the project will involve stopping some areas of work altogether, as well as looking for further efficiencies -accordingly, it is estimated that this will include the loss of around 20 staff vacancies (which could be given up now, but would reduce the indicated 20% savings by the same amount).

Legislative Background

There is no specific legislation, other than Health and Safety law.

Consultation Required/Partner Engagement

This would require consultation with Trades Unions and Local Members. However, it would also require a parallel communication plan, to ensure that the

Have Cost Centre(s) been Identified?	Some
---	------

Is this saving related to the General Fund?	Yes
--	-----

Pets Corner

<u>Option A - Increase Tickets</u>	<u>Visitors</u>	<u>Tickets Sold</u>
Individual Day Ticket	3500	3500
Increase Family Day Ticket	23000	5120
Increase Family Annual Pass	16500	300
Single Education Pass	1200	1200
Donation Box		
Animal Boarding		
Fundraising		
Increase animal sponsorship		
Savings in Food Purchasing		

Total Visitors 44200

<u>Option B - Remove Annual Pass</u>	<u>Visitors</u>	<u>Tickets Sold</u>
Individual Day Ticket	3500	3500
Increase Family Day Ticket	23000	5120
Remove Family Annual Pass		300
Extra Day Pass from Removing Annual Pass	16500	3600
Single Education Pass	1200	1200
Donation Box		
Animal Boarding		
Fundraising		
Increase animal sponsorship		
Savings in Food Purchasing		

Total Visitors 44200

<u>Option C - Peak Charging</u>	<u>Visitors</u>	<u>Tickets Sold</u>
Peak Individual Day Ticket	2800	2800
Off peak Tickets	700	700
Peak Increase Family Day Ticket	15750	3600
Off Peak Family Day Ticket	7250	1500
Increase Family Annual Pass	16500	300
Single Education Pass	1200	1200
Donation Box		
Animal Boarding		
Fundraising		

Increase animal sponsorship
Savings in Food Purchasing

Total Visitors 44200

Option D - Gap achieved fully

	<u>Visitors</u>	<u>Tickets Sold</u>
Individual Day Ticket	3500	3500
Increase Family Day Ticket	23000	5120
Increase Family Annual Pass	16500	300
Single Education Pass	1200	1200
Donation Box		
Animal Boarding		
Fundraising		
Increase animal sponsorship		
Savings in Food Purchasing		

Total Visitors 44200

<u>Current</u>	<u>Projected Increase to</u>	<u>Extra Revenue Generated</u>	<u>Year Estimate</u>
£0.00	£1.00	£3,500	£4,375
£4.00	£5.00	£5,120	£6,400
£15.00	£30.00		£4,500
£1.00	£2.00		£1,200
			£500
			£5,600
			£1,000
£450.00	£1,500.00		£1,050
			£1,000

Generated Income **£25,625**

<u>Current</u>	<u>Projected Increase to</u>	<u>Extra Revenue Generated</u>	<u>Year Estimate</u>
£0.00	£1.00	£3,500	£4,375
£4.00	£5.00	£5,120	£6,400
£15.00	£0.00		-£4,500
£0.00	£5.00		£18,000
£1.00	£2.00		£1,200
			£500
			£5,600
			£1,000
£450.00	£1,500.00		£1,050
			£1,000

Generated Income **£34,625**

<u>Current</u>	<u>Projected Increase to</u>	<u>Extra Revenue Generated</u>	<u>Year Estimate</u>
£0.00	£2.00	£5,600	£7,000
£0.00	£1.00	£700	£875
£4.00	£6.00	£7,200	£9,000
£4.00	£5.00	£1,500	£1,875
£15.00	£30.00		£4,500
£1.00	£2.00		£1,200
			£500
			£5,600
			£1,000

Comments

Increase individual tickets by £1

Nothing at present

Based on 16 hutches@ £5/day for 10 weeks.

Not all animals sponsored.

Through tendering

Comments

Increase individual tickets by £1

Based on Annual Pass holders returning and paying on 12 occasions.

Nothing at present

Based on 16 hutches@ £5/day for 10 weeks.

Not all animals sponsored.

Through tendering

Comments

Increase individual tickets by £2

Increase individual tickets by £1

Nothing at present

Based on 16 hutches@ £5/day for 10 weeks.

Not all animals sponsored.
Through tendering

Comments

All individual tickets increase by £2

Increase to £3 to make shortfall
Nothing at present
Based on 16 hutches@ £5/day for 10 weeks.

Not all animals sponsored.
Through tendering

DETAILED BUDGET PROPOSALS

SERVICE:	Environmental Services
-----------------	------------------------

SAVING NAME:	Pets' Corner
---------------------	--------------

REFERENCE No:	ENV22
----------------------	-------

HEAD OF SERVICE:	Norrie Steed
-------------------------	--------------

CATEGORY:	Income Generation
------------------	-------------------

	Financial Impact:			
	2009/10	2010/11	2011/12	2012/13
	£'000	£'000	£'000	£'000
Costs/(Saving)	0	50	50	50

	Personnel Impact:			
	2009/10	2010/11	2011/12	2012/13
FTE	0	0	0	0
Head Count	0	0	0	0

Brief Description of Budget Saving

Increase charges for entry to Pets' Corner. This amenity is held in high regard by the public, both as a leisure and an educational facility. Since the recent upgrading with £30,000 of capital money last financial year, there have been 44111 people through the gates since April 1st 2009, with the result that £45645 income was recorded by the end of period -76.6% of the total projected for the year (the total income for 2008/09 was £42,261). The total projected spend on the budget for 2009/10 is £97,000, therefore the largest gap, even assuming there was no further income, would be £52,000..

Deliverability Issues and Risks

This amenity is held in high regard by the public, both as a leisure and an educational facility. Since the recent upgrading with £30,000 of capital money last financial year, there have been 44111 people through the gates since April 1st 2009, with the result that £45645 income was recorded by the end of period -76.6% of the total projected for the year (the total income for 2008/09 was £42,261). The total projected spend on the budget for 2009/10 is £97,000, therefore the largest gap, even assuming there was no further income, would be £52,000. There will be some further income, but that can be expected to tail off during winter and early spring. Even so, a modest end of year projection of £65,000 should be possible, so a plan to increase income by £33,600 is submitted. The details of charging options are included on an attached sheet.

Legislative Background

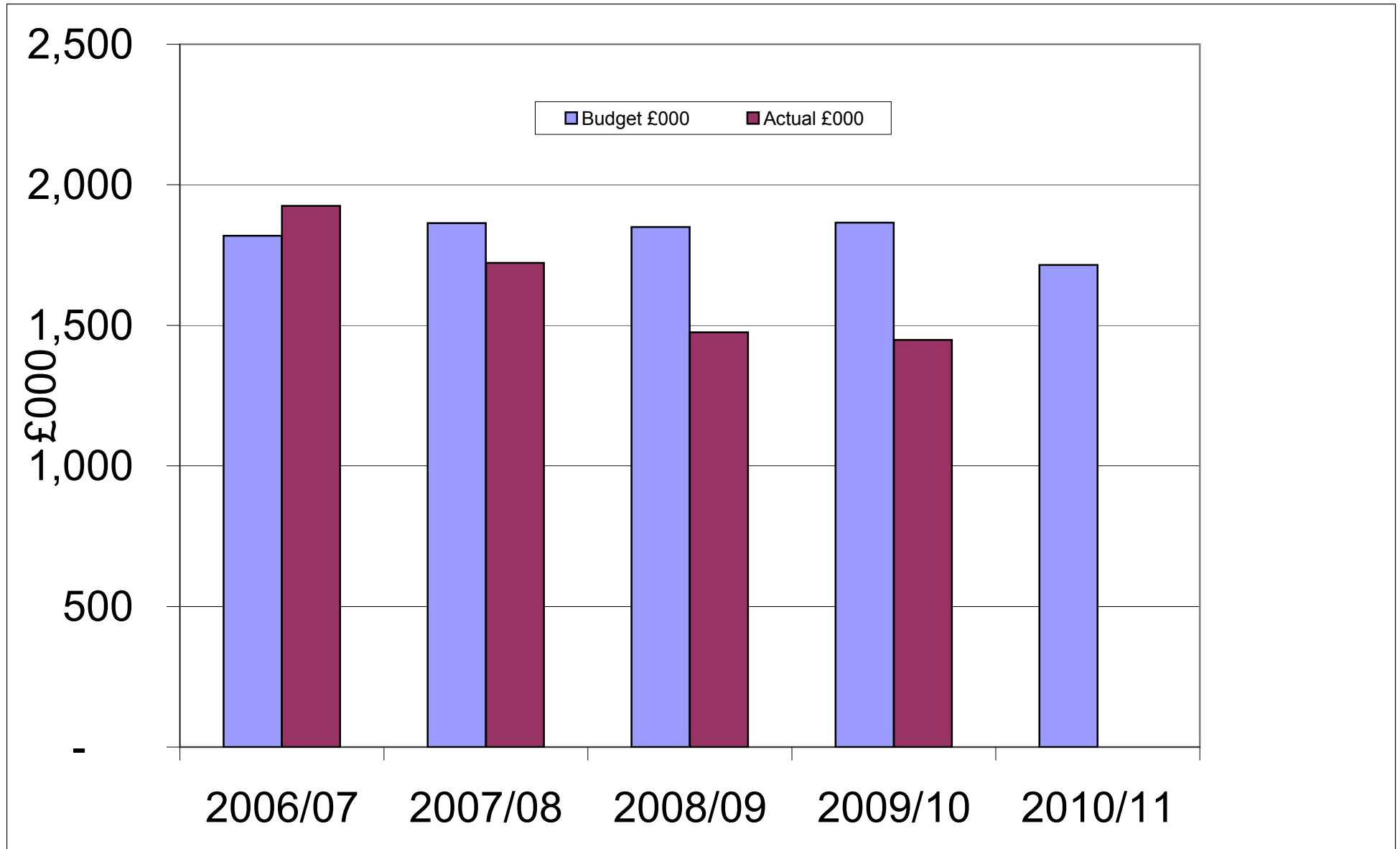
None.

Consultation Required/Partner Engagement

Consultation with Elected members and notification to the public, making them aware that we need their support to maintain this much-loved attraction.

Have Cost Centre(s) been Identified?	Yes
---	-----

Is this saving related to the General Fund?	Yes
--	-----



	Budget £000	Actual £000	
2006/07	1,819	1,925	
2007/08	1,864	1,722	
2008/09	1,850	1,475	
2009/10	1,865	1,449	Actual spend is an estimate based on spend to Period 7 of £845k.
2010/11	1,715	n/a	

Cost centre	Cost centre description	Account	Account description	2009/1-2009/1	2009/1-2009/1
A12451	AIRYHALL C.C.	213	WATER SERVICES	1700	2108
A12452	ALTENS C.C.	213	WATER SERVICES	3500	2539
A12453	BALNAGASK C.C.	213	WATER SERVICES	1600	1661
A12454	BALGOWNIE C.C.	213	WATER SERVICES	1032	1140
A12455	CAIRNCRY C.C.	213	WATER SERVICES	0	1728
A12456	CAIRNFIELD C.C.	213	WATER SERVICES	516	394
A12457	CATHERINE ST. C.C.	213	WATER SERVICES	2369	1079
A12458	CUMMINGS PARK C.C.	213	WATER SERVICES	2676	2861
A12459	DANESTONE C.C.	213	WATER SERVICES	1488	1487
A12460	FERRYHILL C.C.	213	WATER SERVICES	2200	1798
A12461	FROGHALL C.C.	213	WATER SERVICES	2369	2439
A12462	HILTON C.C.	213	WATER SERVICES	2060	1923
A12463	HANOVER C.C.	213	WATER SERVICES	1288	1018
A12464	INCHGARTH C.C.	213	WATER SERVICES	3100	-5067
A12465	KINGSWELLS C.C.	213	WATER SERVICES	2472	1978
A12468	LP RAE C.C.	213	WATER SERVICES	2688	2101
A12469	MIDDLETON PARK C.C.	213	WATER SERVICES	1032	487
A12470	PITTODRIE C.C.	213	WATER SERVICES	639	471
A12471	SHEDDOCKSLEY C.C.	213	WATER SERVICES	5676	3070
A12472	STATION HOUSE C.C.	213	WATER SERVICES	762	1105
A12473	TILLYDRONE C.C..	213	WATER SERVICES	2266	1218
A12474	WOODSIDE C.C.	213	WATER SERVICES	5356	2353
A12501	ALLOTMENTS	213	WATER SERVICES	0	11188
A12506	WINTER GARDENS	213	WATER SERVICES	50000	19216
A12511	DOONIES FARM	213	WATER SERVICES	222	0
A12512	HAZLEHEAD PETS CORNER	213	WATER SERVICES	2472	1629
A12514	LOCHINCH	213	WATER SERVICES	773	1006
A13111	ART GALLERY	213	WATER SERVICES	10300	6263
A13112	PROVOST SKENE HOUSE	213	WATER SERVICES	1357	350
A13115	COWDRAY HALL	213	WATER SERVICES	915	554
A13144	GLOVER HOUSE	213	WATER SERVICES	0	1352
A13161	MARITIME MUSEUM	213	WATER SERVICES	6524	2589
A13175	FREDERICK ST.	213	WATER SERVICES	2575	428
A13211	WHITESPACE	213	WATER SERVICES	1318	327
A13212	CITY MOVES	213	WATER SERVICES	1592	3426
A13312	LIBRARY MEDIA CENTRE	213	WATER SERVICES	0	0
A13317	PROPERTY & ADMIN	213	WATER SERVICES	12875	9586
A13321	AIRYHALL LIB	213	WATER SERVICES	2060	1123
A13322	BR OF DON LIB	213	WATER SERVICES	720	607
A13323	BUCKSBURN LIB	213	WATER SERVICES	720	560
A13324	CORNHILL LIB	213	WATER SERVICES	1236	1030
A13325	COVE LIB	213	WATER SERVICES	1545	2014
A13326	CULTER LIB	213	WATER SERVICES	1236	890
A13327	CULTS LIB	213	WATER SERVICES	824	778
A13328	DYCE LIB	213	WATER SERVICES	876	912
A13329	FERRYHILL LIB	213	WATER SERVICES	515	448
A13331	KINCORTH LIB	213	WATER SERVICES	1133	749
A13332	LINKSFIELD LIB	213	WATER SERVICES	927	350
A13333	MASTRICK LIB	213	WATER SERVICES	720	540
A13334	NORTHFIELD LIB	213	WATER SERVICES	720	233
A13335	TILLYDRONE LIB.	213	WATER SERVICES	1030	934
A13336	TORRY LIB	213	WATER SERVICES	2060	336

A13337	WOODSIDE LIB	213	WATER SERVICES	721	522
B45453	CRECHE FACILITIES	213	WATER SERVICES	0	562
B47491	HILTON CENTRE	213	WATER SERVICES	3605	3467
B47550	KINCORTH ACCESS POINT	213	WATER SERVICES	103	0
C27140	MORTUARY	213	WATER SERVICES	2738	650
C27160	RUTHRIESTON DEPOT	213	WATER SERVICES	793	554
C27211	REFUSE COLLECTION	213	WATER SERVICES	10368	4200
C27220	PUBLIC CONVENIENCES	213	WATER SERVICES	30900	24544
C27304	GROVE CEMETERY	213	WATER SERVICES	164	262
C27307	NEWHILLS CEMETERY	213	WATER SERVICES	0	141
C27313	SPRINGBANK CEMETERY	213	WATER SERVICES	133	164
C27315	TRINITY CEMETERY	213	WATER SERVICES	206	298
C27317	HAZLEHEAD CEMETRY	213	WATER SERVICES	0	1386
C27401	ABERDEEN CREMATORIUM	213	WATER SERVICES	4738	4170
D01101	BUILDING SERVICES 1	213	WATER SERVICES	3804	4002
D01201	BUILDING SERVICES	213	WATER SERVICES	1596	813
D01301	BUILDING SERVICES 3	213	WATER SERVICES	3204	4922
D05101	REFUSE COLLECTION OPERATIO	213	WATER SERVICES	0	10
D05201	STREET SWEEPING 1	213	WATER SERVICES	396	0
D05202	STREET SWEEPING	213	WATER SERVICES	804	0
D05203	STREET SWEEPING 3	213	WATER SERVICES	3600	758
D07101	GROUNDS SERVICES 1	213	WATER SERVICES	5004	5943
D07201	GROUNDS SERVICES 2	213	WATER SERVICES	2496	2309
D07301	GROUNDS SERVICES	213	WATER SERVICES	90000	-13
D08111	BUCKSBURN SWIMMING POOL	213	WATER SERVICES	15036	14309
D08112	KINCORTH SWIMMING POOL	213	WATER SERVICES	13390	14242
D08113	NORTHFIELD SWIMMING POOL	213	WATER SERVICES	16356	15526
D08122	BON ACCORD LEISURE	213	WATER SERVICES	20093	-3853
D08123	HAZLEHEAD BATHS	213	WATER SERVICES	10300	15370
D08211	BALNAGASK GOLF COURSE	213	WATER SERVICES	2060	1944
D08221	AUCHMILL GOLF COURSE	213	WATER SERVICES	996	243
D08222	HAZLEHEAD GOLF COURSE	213	WATER SERVICES	4635	12083
D08224	LINKS GOLF COURSE	213	WATER SERVICES	1545	1831
D08311	ALBURY OUTDOOR SPORTS CEN	213	WATER SERVICES	650	512
D08315	RUTHRIESTON OUTDOOR SP. CEI	213	WATER SERVICES	1000	1884
D08317	TORRY OUTDOOR SPORTS CENTI	213	WATER SERVICES	3500	3241
D08324	LINKS OUTDOOR SPORTS CENTR	213	WATER SERVICES	597	0
D08325	NORTHFIELD OUTDOOR S.C.	213	WATER SERVICES	1236	1052
D08326	ST MACHAR OUTDOOR SP. CENTI	213	WATER SERVICES	2781	2475
D08411	PETERCULTER SPORTS CENTRE	213	WATER SERVICES	4983	4264
D08412	SHEDDOCKSLEY SPORTS CENTR	213	WATER SERVICES	11640	17780
D08420	THE JESMOND CENTRE	213	WATER SERVICES	7104	5464
D08421	ALEX COLLIE SPORTS CENTRE	213	WATER SERVICES	8448	4101
D08423	KINCORTH SPORTS CENTRE	213	WATER SERVICES	4781	4325
D08424	TORRY INDOOR SPORTS CENTRE	213	WATER SERVICES	3384	0
D08521	AULTON PAVILION	213	WATER SERVICES	4944	2200
D08522	HAZLEHEAD PAVILION	213	WATER SERVICES	738	1185
D08611	BEACH LEISURE CENTRE	213	WATER SERVICES	77203	45531
D08613	ICE RINK	213	WATER SERVICES	5352	9329
D08621	BON ACCORD INDOOR BOWLING	213	WATER SERVICES	3705	3695
D08625	WESTBURN INDOOR SPORTS CEI	213	WATER SERVICES	979	946
D09102	DEPOT OVERHEADS	213	WATER SERVICES	996	385
D09301	ROADS SERVICES	213	WATER SERVICES	13008	17871
D20101	HAZLEHEAD NURSERY	213	WATER SERVICES	996	1434
D20102	SHELTERED PLACEMENT SCHEM	213	WATER SERVICES	0	604

D20301	BEACH BALLROOM ACCOMMODA	213	WATER SERVICES	8508	10520
E10130	NP-SCHOOLS AMALGAMATION	213	WATER SERVICES	0	0
E20283	ASHGROVE CHILDRENS CENTRE	213	WATER SERVICES	0	823
E20469	HILTON	213	WATER SERVICES	424	436
E20508	KINGSWELLS	213	WATER SERVICES	0	697
E20754	TORRY	213	WATER SERVICES	1702	2553
E20783	VICTORIA ROAD	213	WATER SERVICES	0	-10
E30250	ABBOTSWELL	213	WATER SERVICES	15117	10776
E30277	AIRYHALL	213	WATER SERVICES	3011	2948
E30286	ASHLEY ROAD	213	WATER SERVICES	7001	5983
E30289	BRAEHEAD SCHOOL	213	WATER SERVICES	5097	5614
E30304	AIRYHALL ANNEXE	213	WATER SERVICES	3258	6446
E30307	BRAMBLE BRAE	213	WATER SERVICES	1934	4564
E30313	BROOMHILL	213	WATER SERVICES	5340	4389
E30316	BUCKSBURN	213	WATER SERVICES	20169	2969
E30319	BYRON PARK	213	WATER SERVICES	7775	5005
E30325	CAUSEWAYEND	213	WATER SERVICES	4339	3630
E30346	CORNHILL	213	WATER SERVICES	10487	8150
E30352	CHARLESTON	213	WATER SERVICES	6195	4875
E30355	CRAIGHILL	213	WATER SERVICES	7405	16726
E30364	CULTER	213	WATER SERVICES	5681	5931
E30367	CULTS	213	WATER SERVICES	10460	10657
E30379	DANESTONE	213	WATER SERVICES	8223	4483
E30397	RIVERBANK SCHOOL	213	WATER SERVICES	7627	6863
E30403	DYCE	213	WATER SERVICES	13572	20110
E30415	FERNIELEA	213	WATER SERVICES	11738	5392
E30418	FERRYHILL	213	WATER SERVICES	11257	3019
E30424	FOREHILL	213	WATER SERVICES	5844	3899
E30433	GILCOMSTOUN	213	WATER SERVICES	12070	6431
E30436	GLASHIEBURN	213	WATER SERVICES	7374	6325
E30439	GREENBRAE	213	WATER SERVICES	2825	2920
E30442	GREENFERN-CLOSED SCHOOL	213	WATER SERVICES	115	2849
E30445	HANOVER STREET	213	WATER SERVICES	2322	0
E30454	HAZLEHEAD	213	WATER SERVICES	10279	8485
E30463	HOLY FAMILY RC	213	WATER SERVICES	9526	5766
E30484	KAIMHILL	213	WATER SERVICES	15880	12832
E30490	KAIMHILL PLAY	213	WATER SERVICES	0	127
E30508	KINGSWELLS	213	WATER SERVICES	5813	2886
E30514	KIRKHILL	213	WATER SERVICES	5564	6210
E30517	KITTYBREWSTER	213	WATER SERVICES	5683	4632
E30546	LOIRSTON	213	WATER SERVICES	10250	8626
E30549	MARCHBURN	213	WATER SERVICES	6887	3230
E30564	MIDDLEFIELD	213	WATER SERVICES	3844	4273
E30567	MIDDLETON PARK	213	WATER SERVICES	1488	3846
E30570	MILE-END	213	WATER SERVICES	7455	4553
E30573	MILLTIMBER	213	WATER SERVICES	7247	3923
E30579	MUIRFIELD	213	WATER SERVICES	11451	8044
E30591	NEWHILLS	213	WATER SERVICES	4400	3176
E30633	QUARRYHILL	213	WATER SERVICES	5065	4324
E30669	SCOTSTOWN	213	WATER SERVICES	5947	5914
E30675	SEATON	213	WATER SERVICES	5657	4726
E30687	SKENE SQUARE	213	WATER SERVICES	15845	5506
E30690	SMITHFIELD	213	WATER SERVICES	6301	10029
E30693	KINGSFORD SCHOOL	213	WATER SERVICES	6372	6738
E30696	ST JOSEPHS RC	213	WATER SERVICES	5878	13814

E30699	ST MACHAR PRIMARY	213	WATER SERVICES	1687	6185
E30717	ST PETERS RC	213	WATER SERVICES	2454	4077
E30720	STONEWOOD	213	WATER SERVICES	6425	5113
E30732	SUNNYBANK	213	WATER SERVICES	8355	7684
E30771	TULLOS	213	WATER SERVICES	22167	15999
E30774	TULLOS PLAYING FIELD	213	WATER SERVICES	2668	2691
E30777	UPPER W'FIELD	213	WATER SERVICES	1457	1497
E30783	VICTORIA ROAD	213	WATER SERVICES	7744	8935
E30795	WALKER ROAD	213	WATER SERVICES	6818	14931
E30798	WESTPARK SCHOOL	213	WATER SERVICES	7465	8694
E30804	WOODSIDE	213	WATER SERVICES	5425	6828
E40253	ABERDEEN GRAMMAR	213	WATER SERVICES	29847	16842
E40255	ABERDEEN GRAMMAR PLAYING F	213	WATER SERVICES	6693	1102
E40292	BANKHEAD ACADEMY	213	WATER SERVICES	36026	22646
E40310	BRIDGE OF DON	213	WATER SERVICES	20352	34901
E40370	CULTS ACADEMY	213	WATER SERVICES	28572	21358
E40406	DYCE ACADEMY	213	WATER SERVICES	17621	18799
E40451	HARLAW ACADEMY	213	WATER SERVICES	17854	17528
E40452	HARLAW ACADEMY PLAYING FIEL	213	WATER SERVICES	1312	369
E40457	HAZLEHEAD ACADEMY	213	WATER SERVICES	26055	35745
E40499	KINCORTH ACADEMY	213	WATER SERVICES	23880	31650
E40543	LINKSFIELD ACADEMY	213	WATER SERVICES	31848	25114
E40597	NORTHFIELD ACADEMY	213	WATER SERVICES	16335	16967
E40606	OLDMACHAR ACADEMY	213	WATER SERVICES	19527	15415
E40702	ST MACHAR ACADEMY	213	WATER SERVICES	29806	25010
E40756	TORRY ACADEMY	213	WATER SERVICES	11187	10478
E50256	ABERDEEN SCHOOL FOR THE DE	213	WATER SERVICES	3763	3057
E50301	BEECHWOOD	213	WATER SERVICES	12696	0
E50340	CORDYCE RES	213	WATER SERVICES	3541	10857
E50505	HAZELWOOD	213	WATER SERVICES	14485	12084
E50552	MARLPOOL	213	WATER SERVICES	6796	6057
E50660	PUPIL SUPPORT SERVICE-SECON	213	WATER SERVICES	678	2074
E50801	WOODLANDS	213	WATER SERVICES	2091	0
E60298	BEACON COMMUNITY/SPORTS CE	213	WATER SERVICES	12329	12289
E60502	KINCORTH CL&DC	213	WATER SERVICES	1765	2511
E60543	HANOVER/CITY CENTRE CL& D	213	WATER SERVICES	182	0
E60546	LOIRSTON PRIMARY CL&DC	213	WATER SERVICES	2647	1085
E60555	MASTRICK CL&DC	213	WATER SERVICES	3959	1306
E60557	NP-MASTRICK YOUTH CAFE	213	WATER SERVICES	386	622
E60603	NORTHFIELD CL&DC	213	WATER SERVICES	3897	1803
E60627	POWIS YOUTH PROJECT	213	WATER SERVICES	1098	1192
E60639	ROSEMOUNT CL&DC	213	WATER SERVICES	3465	2810
E60663	RUTHRIESTON CL&DC	213	WATER SERVICES	723	2785
E60678	SEATON COMMUNITY PROJECT	213	WATER SERVICES	0	1134
E60750	PORTAL CL&DC	213	WATER SERVICES	187	129
E60759	TORRY CL&DC	213	WATER SERVICES	0	478
E65358	CROMDALE OUTDOOR CENTRE	213	WATER SERVICES	5482	974
F09210	MANAGEMENT & GENERAL COST:	213	WATER SERVICES	6180	5793
G12170	KITTYBREWSTER ADMIN	213	WATER SERVICES	30900	26734
H70236	RESEARCH & DEVELOPMENT	213	WATER SERVICES	0	3973
H70312	HOUSING ASSISTANTS-CENTRAL	213	WATER SERVICES	2198	2505
H70316	SUB OFFICE-CENTRAL	213	WATER SERVICES	0	2273
H70333	MASTRICK AREA OFFICE	213	WATER SERVICES	0	1679
H70336	LOGIE SUB OFFICE	213	WATER SERVICES	1970	1174
H70422	CLINTERTY CARAVAN SITE	213	WATER SERVICES	0	611

H70424	HOMELESS HOSTELS	213	WATER SERVICES	0	3996
H70724	ROSEMOUNT	213	WATER SERVICES	0	727
H70763	TORRY	213	WATER SERVICES	0	120
H70765	KINCORTH	213	WATER SERVICES	0	667
H70795	HRA CENTRAL	213	WATER SERVICES	1000	0
H70796	HRA NORTH	213	WATER SERVICES	1000	0
H70797	HRA SOUTH	213	WATER SERVICES	1000	0
J66450	COMMUNITY TRAINING UNIT	213	WATER SERVICES	0	1167
L52001	AREA OFFICE-BUCKSBURN	213	WATER SERVICES	1000	641
L52002	AREA OFFICE-PETERCULTER	213	WATER SERVICES	1000	669
L52021	DISTRICT COURT	213	WATER SERVICES	1833	964
L52132	PURCHASING WHITEMYRES	213	WATER SERVICES	3200	3348
P03001	GENERAL ABERDEEN SEAFOOD F	213	WATER SERVICES	8240	0
P03080	GEN. BERRYDEN BUSINESS CENT	213	WATER SERVICES	0	540
P03430	GREENBANK CRES A	213	WATER SERVICES	0	0
P03460	GENERAL URQUHART RD	213	WATER SERVICES	0	712
P03468	105-109 URQUHART RD	213	WATER SERVICES	0	451
P04001	GENERAL WILLOWBANK ROAD	213	WATER SERVICES	20600	1573
P04120	GEN. GRANITEHILL ENT. CENTRE	213	WATER SERVICES	0	4498
P04389	GENERAL KING STREET	213	WATER SERVICES	0	4283
P04584	346 GEORGE STREET	213	WATER SERVICES	0	911
P06001	TOWN HOUSE	213	WATER SERVICES	27759	24743
P06005	ST NICHOLAS HOUSE GENERAL	213	WATER SERVICES	#####	87518
P06015	OLD ABERDEEN	213	WATER SERVICES	13390	13376
P06020	SUMMERHILL	213	WATER SERVICES	30577	16498
P06030	AECC OFFICE ACCOMMODATION	213	WATER SERVICES	7849	6402
P09008	FREE CAR PARK CROMBIE RD TO	213	WATER SERVICES	1030	583
P09009	FREE CAR PARK STATION RD BBL	213	WATER SERVICES	1030	226
P09011	VIRGINIA STREET	213	WATER SERVICES	3090	622
P09012	CHAPEL ST MULTI	213	WATER SERVICES	4120	3617
P09014	DENBURN MULTI STOREY	213	WATER SERVICES	4120	4239
P09016	EAST NORTH STREET	213	WATER SERVICES	2060	1031
P09017	GREYFRIARS/GALLOWGATE	213	WATER SERVICES	2060	1925
P09020	WEST NORTH ST	213	WATER SERVICES	2060	992
P09022	FREE CAR PARKS	213	WATER SERVICES	0	0
P09023	ZONE A-GOLDEN SQUARE ETC	213	WATER SERVICES	0	0
P09033	BRIDGE OF DON PARK & RIDE	213	WATER SERVICES	4120	4506
P09039	FONTHILL RD PARKING	213	WATER SERVICES	0	97
P09041	54 FREDERICK STREET	213	WATER SERVICES	2060	1494
P09044	KINGSWELLS PARK & RIDE	213	WATER SERVICES	3090	3310
P09071	FREE CAR PARK AUCHMILL RD	213	WATER SERVICES	0	35
P09074	FREE CAR PARK DUNMAIL AVENUE	213	WATER SERVICES	530	140
P09075	FREE CAR PARK GREENBURN ROAD	213	WATER SERVICES	510	64
P09076	FREE CAR PARK 597 KING STREET	213	WATER SERVICES	510	70
P09080	FREE CAR PARK VICTORIA STREET	213	WATER SERVICES	510	97
P09099	GENERAL	213	WATER SERVICES	0	0
S57115	GFA EXCHEQUER HOUSE	213	WATER SERVICES	3863	2415
S57117	GFA KINCORTH OFFICE	213	WATER SERVICES	2575	1095
S57118	GFA MASTRICK OFFICE	213	WATER SERVICES	3396	2068
S57119	GFA QUARRY CENTRE	213	WATER SERVICES	448	0
S57122	GFA TULLOS-CFT TEAM 3	213	WATER SERVICES	2060	0
S57123	GFA KIRKGATE HOUSE	213	WATER SERVICES	18864	6495
S58201	LD-DC BURNSIDE	213	WATER SERVICES	2318	1750
S58202	LD-DC COMM SPECIAL NEEDS GROUP	213	WATER SERVICES	2987	1393
S58204	LD-DC GARDEN CRAFT PRODUCT	213	WATER SERVICES	2060	943

S58205	LD-DC PARK HOUSE	213	WATER SERVICES	5672	0
S58206	LD-DC ROSEHILL	213	WATER SERVICES	6790	5355
S58252	PD-DC CHOICES	213	WATER SERVICES	5000	0
S58300	LD-RC VOLUNTARY ORG'S	213	WATER SERVICES	0	567
S58303	LD-RC BACK HILTON ROAD	213	WATER SERVICES	3090	3756
S58304	LD-RC DOMINIES ROAD	213	WATER SERVICES	2318	4809
S58305	LD-RC KAIM COURT	213	WATER SERVICES	0	1480
S58306	LD-RC POLMUIR HOSTEL	213	WATER SERVICES	618	0
S58308	LD-RC STOCKET PARADE	213	WATER SERVICES	4120	4090
S58422	PD-CC OCCUPATIONAL THER STC	213	WATER SERVICES	1391	1785
S58425	PD-CC HORIZONS REHAB CENTRI	213	WATER SERVICES	2781	8212
S59221	CYP-DNFC WILLIAMSON FAMILY C	213	WATER SERVICES	3650	2045
S59222	CYP-DNFC DEESIDE FAMILY CEN	213	WATER SERVICES	2405	1734
S59223	CYP-DNFC TILLYDRONE FAMILY C	213	WATER SERVICES	979	2039
S59226	CYP-DNFC QUARRY FAMILY CEN	213	WATER SERVICES	0	5141
S59228	CYP-DNFC ASHGROVE FAMILY CE	213	WATER SERVICES	1800	931
S59301	CYP-RC KINGSFIELD	213	WATER SERVICES	0	1044
S59303	CYP-RC GILBERT ROAD	213	WATER SERVICES	206	1472
S59304	CYP-RC NETHERHILLS	213	WATER SERVICES	0	406
S59305	CYP-RC KINCORTH	213	WATER SERVICES	618	1241
S59315	CYP OUTREACH TEAM	213	WATER SERVICES	391	2236
S59331	THE WILLOWS	213	WATER SERVICES	1442	327
S59339	STEVENSON COURT	213	WATER SERVICES	0	116
S59400	CYP ADOPTION/PERMANENCE TE	213	WATER SERVICES	4738	2051
S59441	CYP-IT TEAM	213	WATER SERVICES	111	0
S60202	OP-DC BALANGASK DAY CENTRE	213	WATER SERVICES	2995	2689
S60203	OP-DC CRAIGTON ROAD DAY CEM	213	WATER SERVICES	3090	3422
S60205	OP-DC CULTER DAY CENTRE	213	WATER SERVICES	567	822
S60207	OP-DC LINKSFIELD DAY CENTRE	213	WATER SERVICES	515	408
S60305	OP-SH KINGSWOOD V SH HSG	213	WATER SERVICES	3090	3247
S60307	OP-SH CLASHIEKNOWE	213	WATER SERVICES	3000	2411
S60362	OP-RC ABERDON	213	WATER SERVICES	6180	7021
S60363	OP-RC BALNAGASK	213	WATER SERVICES	8034	8043
S60364	OP-RC CROFT HOUSE	213	WATER SERVICES	7500	7327
S60365	OP-RC FERGUS HOUSE	213	WATER SERVICES	7416	10581
S60367	OP-RC ROSEWELL	213	WATER SERVICES	4120	0
S62200	MI-DC VOLUNTARY ORG'S	213	WATER SERVICES	0	146
S63112	CJ FIELDWORK	213	WATER SERVICES	6438	2952
S63150	CJ COMMUNITY SERVICE ORDER	213	WATER SERVICES	3492	1368
S63160	CJ DRUG TREAT & TESTING ORDE	213	WATER SERVICES	0	526
S63162	CJ - MANDATORY DRUG TESTING	213	WATER SERVICES	0	526
S63163	CJ - ARREST REFERRAL	213	WATER SERVICES	0	526
S63303	CJ-RC ST FITTICK'S HOSTEL	213	WATER SERVICES	2678	1882
S64113	OAS WELFARE RIGHTS	213	WATER SERVICES	0	0
S64114	YOUNG PEOPLES THROUGH CARE	213	WATER SERVICES	1030	824
S64302	OAS-RC VICTORIA HOUSE	213	WATER SERVICES	6695	0
S64303	OAS-RC GLAMIS COTTAGE	213	WATER SERVICES	2369	3925
S64304	SP-RC MARISHALL STREET	213	WATER SERVICES	1751	0
S64400	OAS THROUGH CARE/AFTERCARE	213	WATER SERVICES	1751	0
S64500	OAS HOME SUPPORT WORK TEA	213	WATER SERVICES	0	0
W25190	NP-ARTS & CREATIVE INDUSTRIE	213	WATER SERVICES	0	1352